

Introduction to McMaster's Principles of Community Engagement: Research

**C.A.
Klassen**



McMaster's Office of Community Engagement

- Network for Community-Campus Partnerships formed in 2011
- Develops and promotes community-engagement opportunities across campus, Hamilton, and region
- Removes barriers for community to engage with the university, and vice versa
- Offer 1-on-1 consultation, training, resource development, and events
- Hosts Community Engagement courses, CityLAB and Interdisciplinary Minor



Office of
Community
Engagement

Definitions

Communities are “networks of people tied together by solidarity, a shared identity and set of norms, that does not necessarily reside in a place.” (Bradshaw, 2008).

Source: Bradshaw, Ted K., “The Post-Place Community: Contributions to the Debate about the Definition of Community” *COMMUNITY DEVELOPMENT: Journal of the Community Development Society*, Vol. 39, No. 1, 2008

Definitions

Community engagement (CE) at McMaster University:

- **valuing the expert knowledge** and passion that members of the community (both local and global) have about their communities and issues affecting them
- **fostering ongoing collaboration between University and community partners** on how to better understand and consider the issues identified as priorities by local and global communities
- performing research, teaching and service **with community members** and partners for the public good within the local or global community

The Long and Winding Road



This Photo by Unknown Author is licensed under CC BY-NC-ND

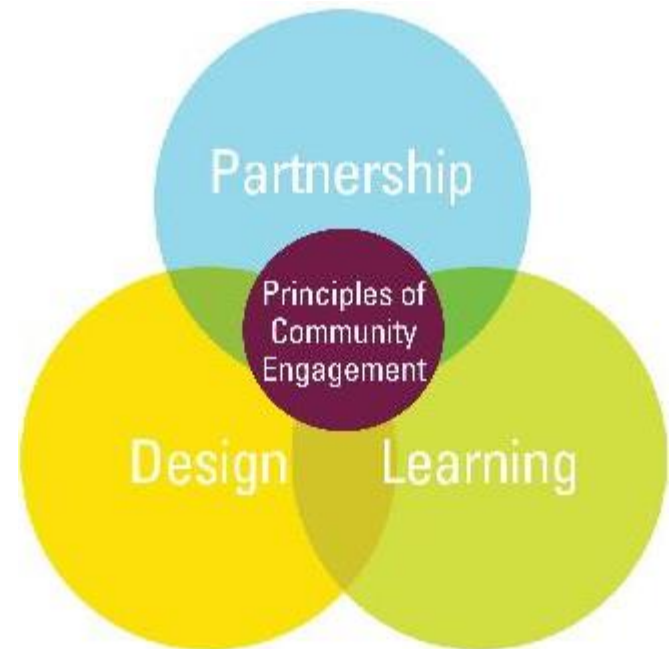
CER Facilitator Role

- Created to facilitate and support research at McMaster with connection and benefit to Hamilton communities, the role has three major functions:
 1. Providing support to faculty and graduate students involved in CER;
 2. Oversight and development of the McMaster Research Shop.
 3. Liaising between partners and regional and national CER networks.

McMaster's Principles of Community Engagement

Co-developed with our partners

- 1. Relationships**
- 2. Reciprocity**
- 3. Equity**
- 4. Continuity**
- 5. Openness to Learning**
- 6. Commitment to Act**



1. Respectful Relationships:

Foundational Principle

We can't have community without relationships—these are the connections that **build community**. Any successful partnership must be built on **trusting** and respectful relationships guided by **integrity**.



Building respectful relationships can help you:

- 1) Get to know your partner & their interests
- 2) Clarify expectations
- 3) Identify future partnership opportunities

PACER 2019 Winners



The Olive
Branch of Hope
Cancer Support Services



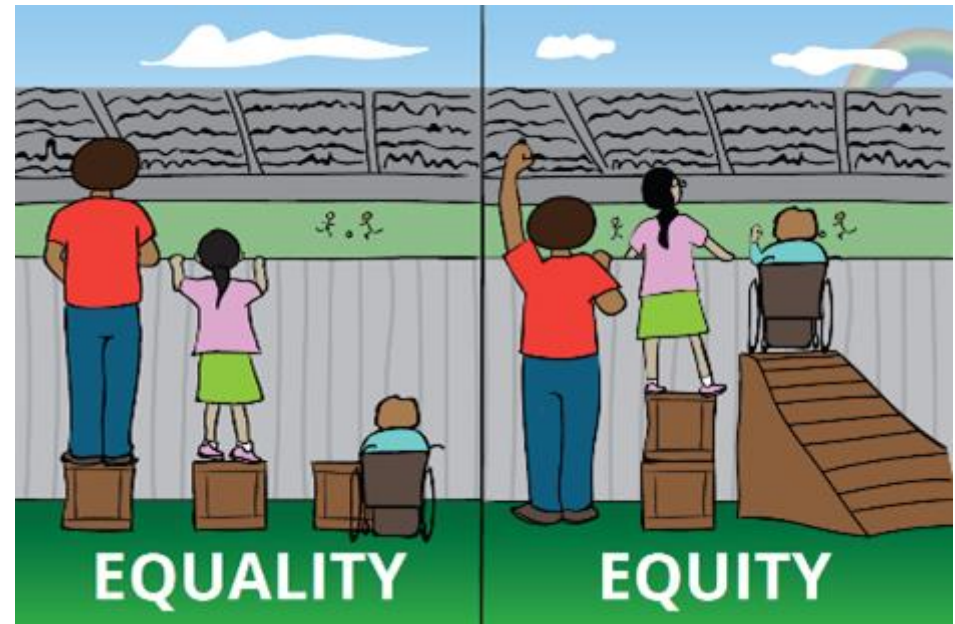
2. Reciprocity:

From design, to participation, to the outcomes of a project, we strive to work together for **mutual benefit.**

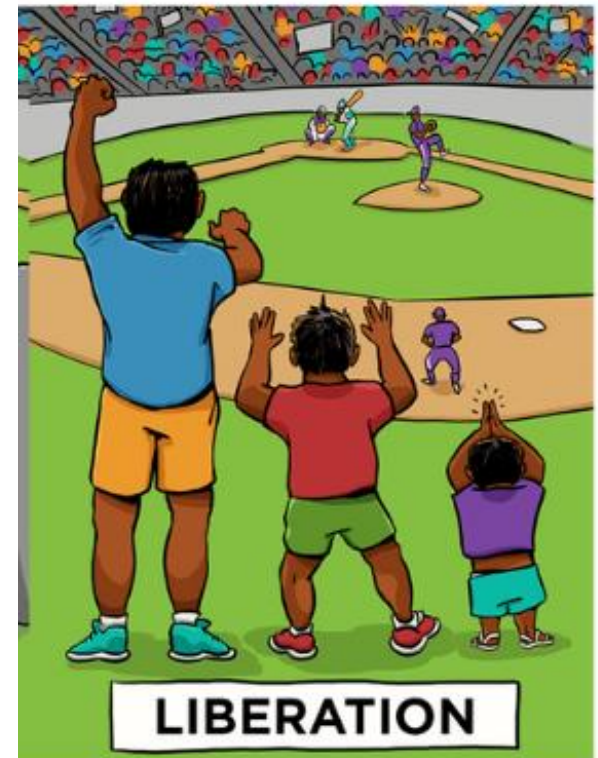
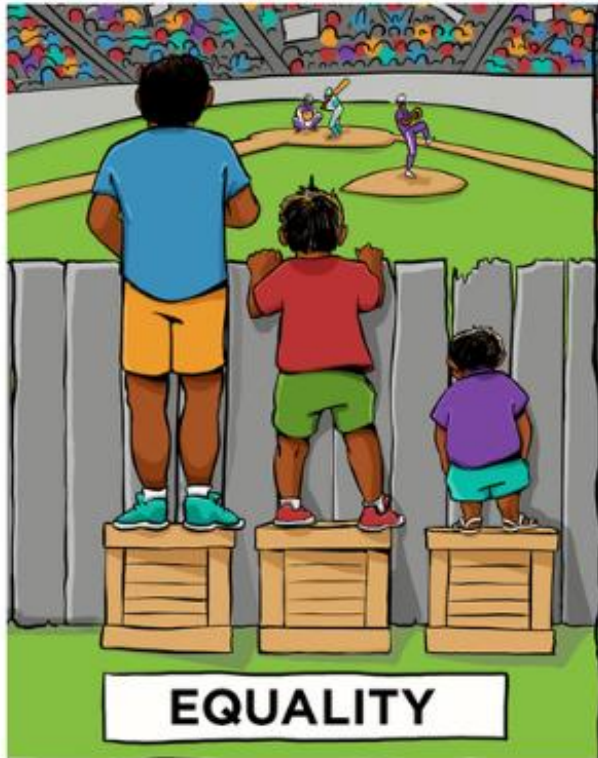


3. Equity:

We are conscious of the **historical and structural inequities** that exist in society and strive to provide access and **opportunities to all** residents and members of our communities.



3. Equity:



Equity entails striving to reduce barriers to participation as much as possible

4. Continuity:

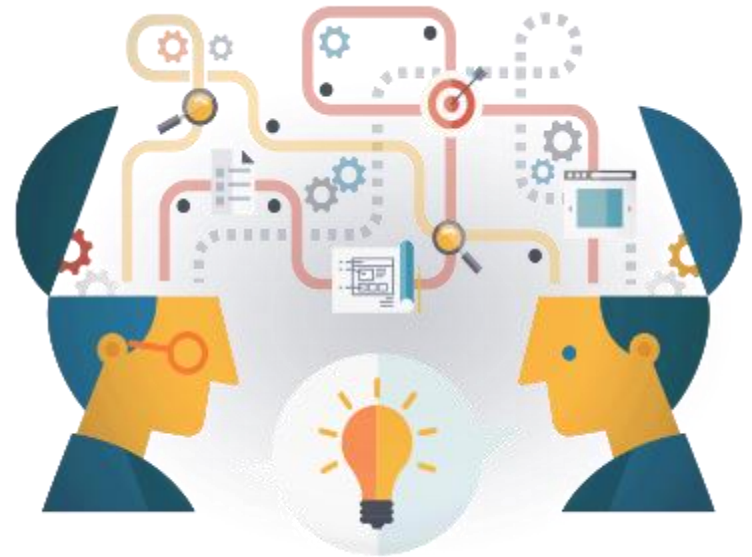
Acknowledging that different communities work on different timelines and schedules, we strive to consider both the **short and long-term implications** of our work together.



5. Openness to Learning:

Change takes time.

We are committed to **continually learn** from and **evaluate** our work together, reflecting on and sharing both our successes and failures to grow as individuals, partnerships, and communities.



6. Commitment to Act:

We aspire to make a positive difference in our community by **sharing** and **acting on our knowledge** to contribute to the greater social good.



Connect with us!

- **Like, follow, or tag us online** to share or learn about upcoming events, new resources, or stories of community engagement.
- Social Media: **@McMasterCE**
- Website: **community.mcmaster.ca**
- **Sign up for our Community-Campus Newsletter**



Office of
Community
Engagement